

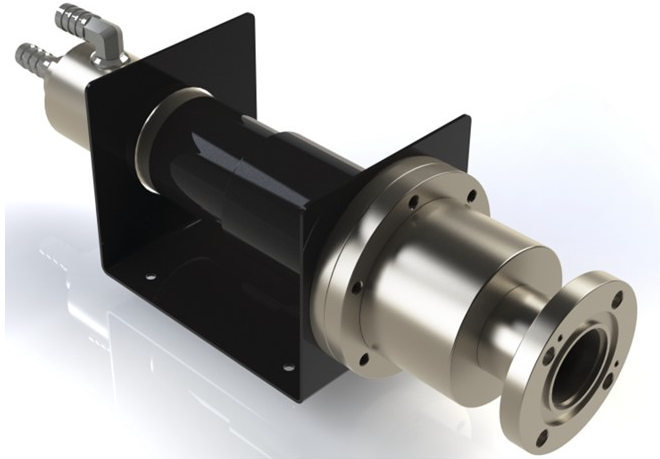
## ➤ Impedans Dummy Load with QC interface

- *Impedance:* 50 Ohm
- VSWR: Max 1.1 up to 100MHz
- Interface: QC Type EIA

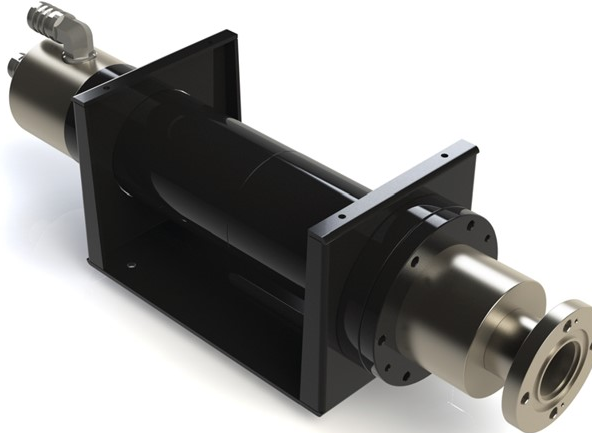
### *Advantage:*

- Reflect Power below 3 watts @3kW input, Reflect Power below 6 watts @10kW input;
- 24hours service time, quick change in week;
- Long lifetime compare with same type

10kW Water Cooled Dummy Load



30kW Water Cooled Dummy Load



5kW/10kW Oil Cooled Dummy Load

